



COMPANY PRESENTATION RD&S GROUP

C!TE

**DA
LI.**

SCINTILLANT
REDEVELOPERS

 **2 CHANGE IT**

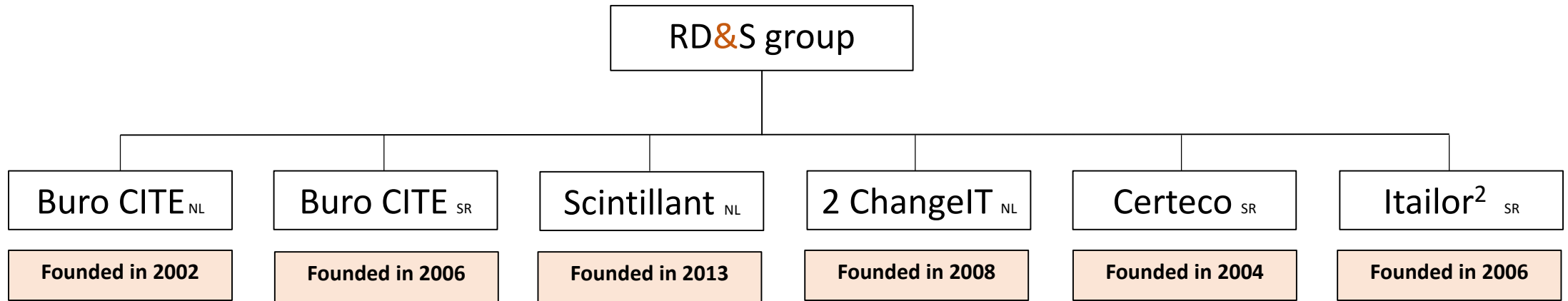
Itailor²

CERTECO
detaching • projectsourcing • interim management

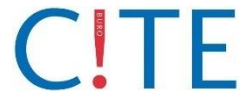
RD&S GROUP FOR SUSTAINABLE RESULTS

MARKETS





Total workforce is 35 engineers and consultants



2 CHANGE IT



RD&S GROUP FOR SUSTAINABLE RESULTS

TECHNOLOGY PARTNERS



Waste management

Constructions

Bridges



Re-use of materials



Waste to Energy solutions



Sustainable parking solutions



Drinking water solution



ERP solutions



Mobile drinking water installation

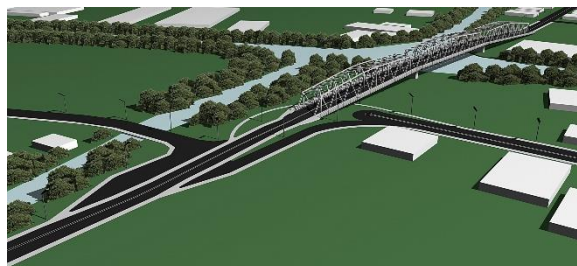
Waste water treatment

SERVICES



1. Structures
2. Engineering Public Space
3. Public Space Management
4. Employment Agency
5. Software Development & Business Intelligence
6. Urban Planning & Development

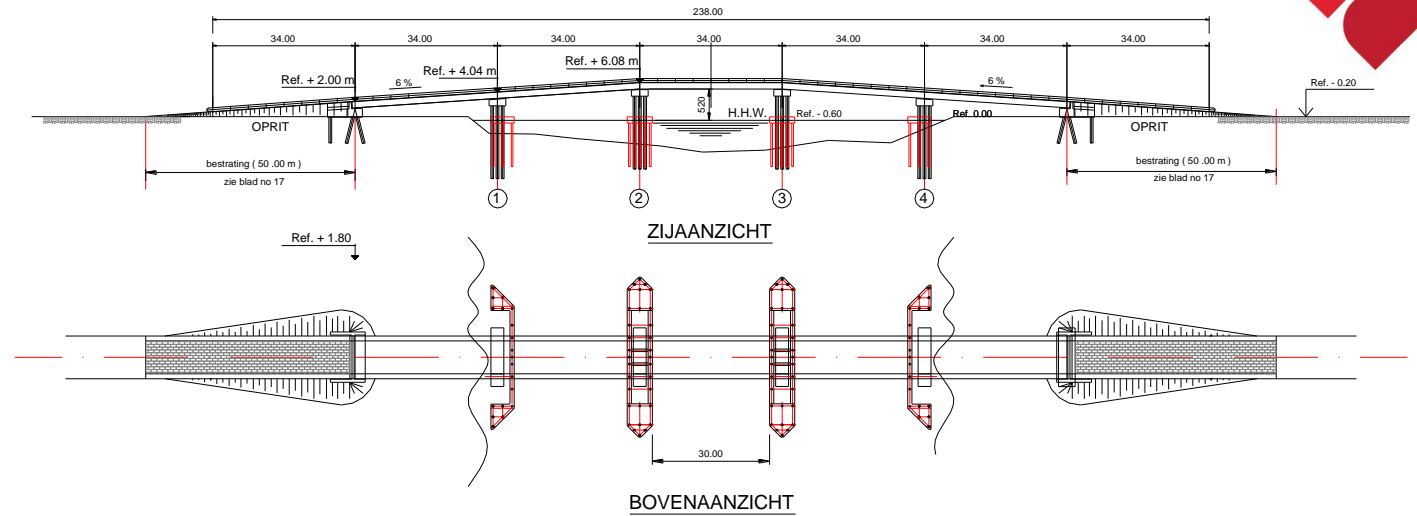
STRUCTURES



- **Schedule of requirements**
Defining the requirements with the client
- **Sketching and Design**
We optimize the design, strength and stability calculations.
- **Technical drawings and contract specifications**
Based on the technical design, contract specifications are drawn up
- **Procurement and Construction**
We organize the tender process up to the contract award
- **Application, management and maintenance**
To ensure functionality and structural integrity regular maintenance is essential. We advise on managing construction maintenance and set up maintenance plans.



- **Bridges**
Brigde over the Saramaccariver, in Suriname
- **Type**
Dutch class 60 bridge, with 5 spans of 34 meters
- **Material**
Concrete





- **Bridges**

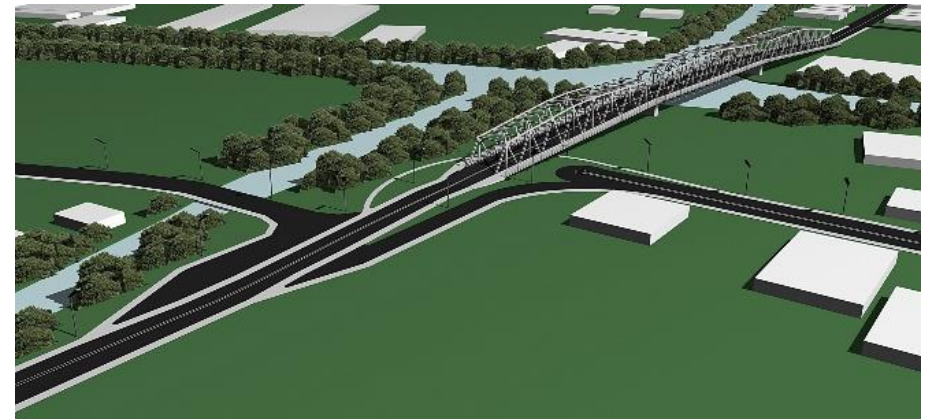
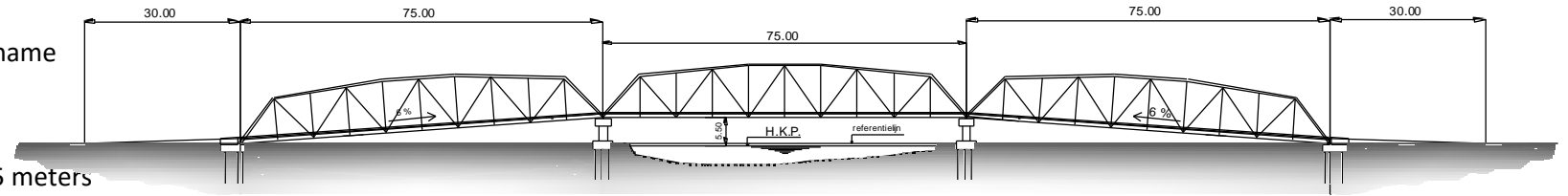
Brigde over the Saramacca canal, in Suriname

- **Type**

Dutch class 60 bridge, with 3 spans of 75 meters

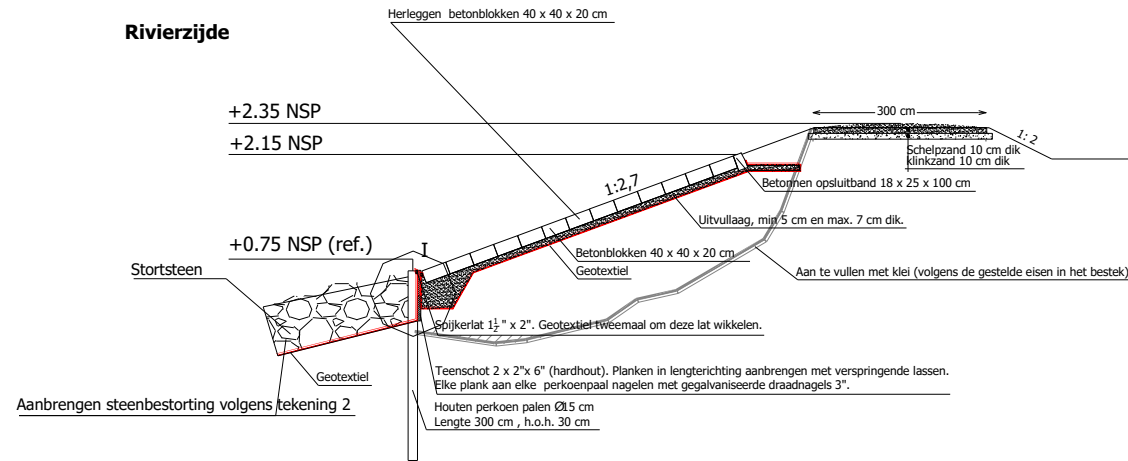
- **Material**

Steel (galvanized)





- **River dikes**
Commewijne river, near Paramaribo
- **Type**
Rockfill and slope blocks. Length 900 m.
- **Material**
Concrete and natural stones

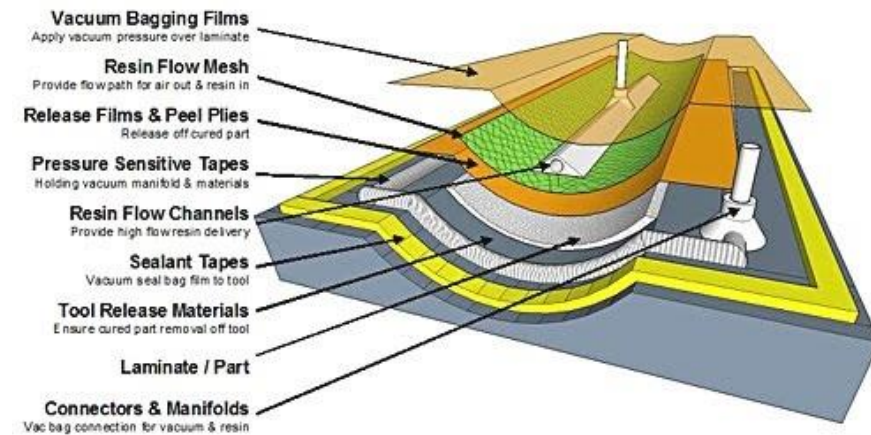
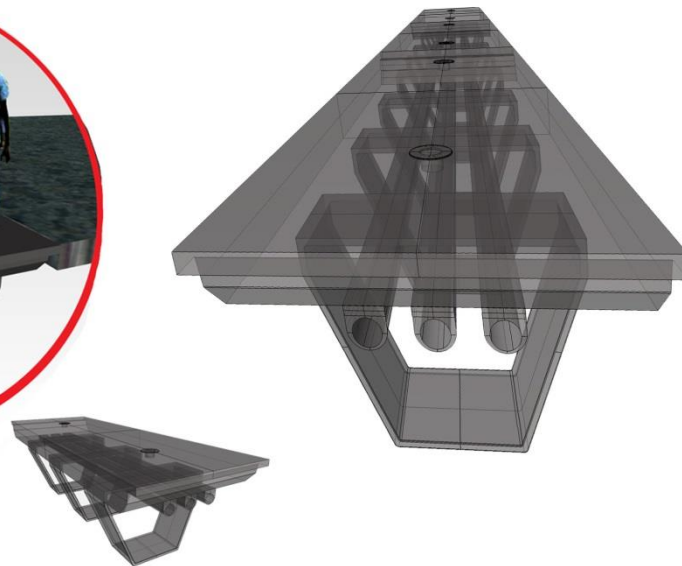


Dwarsdoorsnede huidige oeververdediging
Schaal 1: 100



Which is a structural fiber and a plastic, this is known as Fiber Reinforced Plastics, or FRP for short. Like straw, the fiber provides the structure and strength to the composite, while a plastic polymer holds the fiber together. Common types of fibers used in FRP composites are:

- Fiberglass
- Carbon Fiber
- Aramid Fiber





- Retaining structures

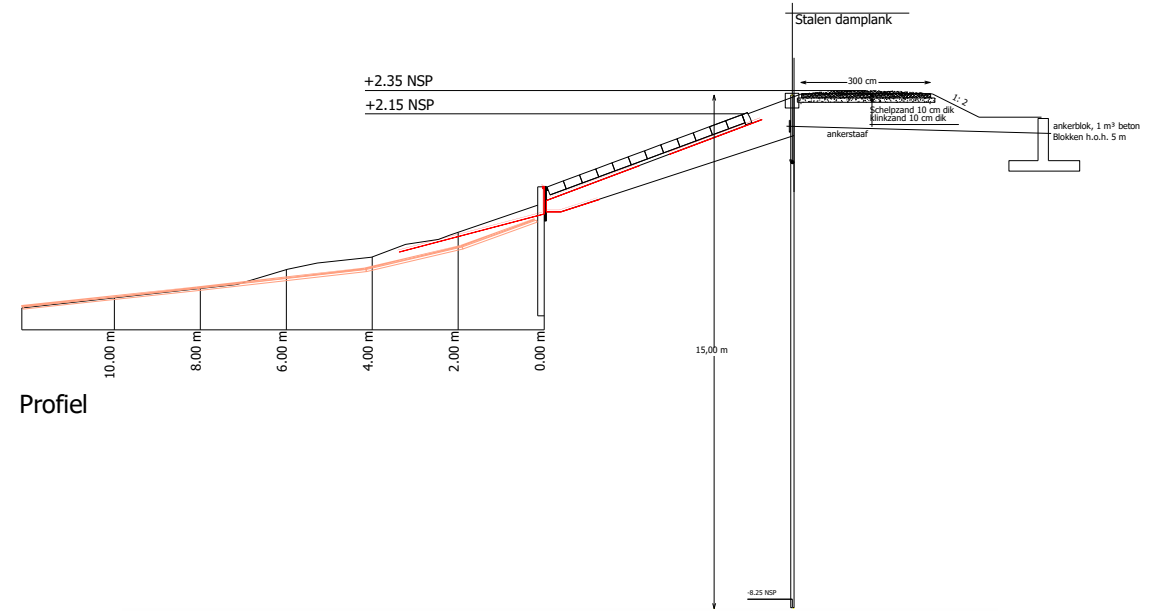
Marowijne river near the border with French Guyana

- Type

Steel sheetpiles. Length 350 m

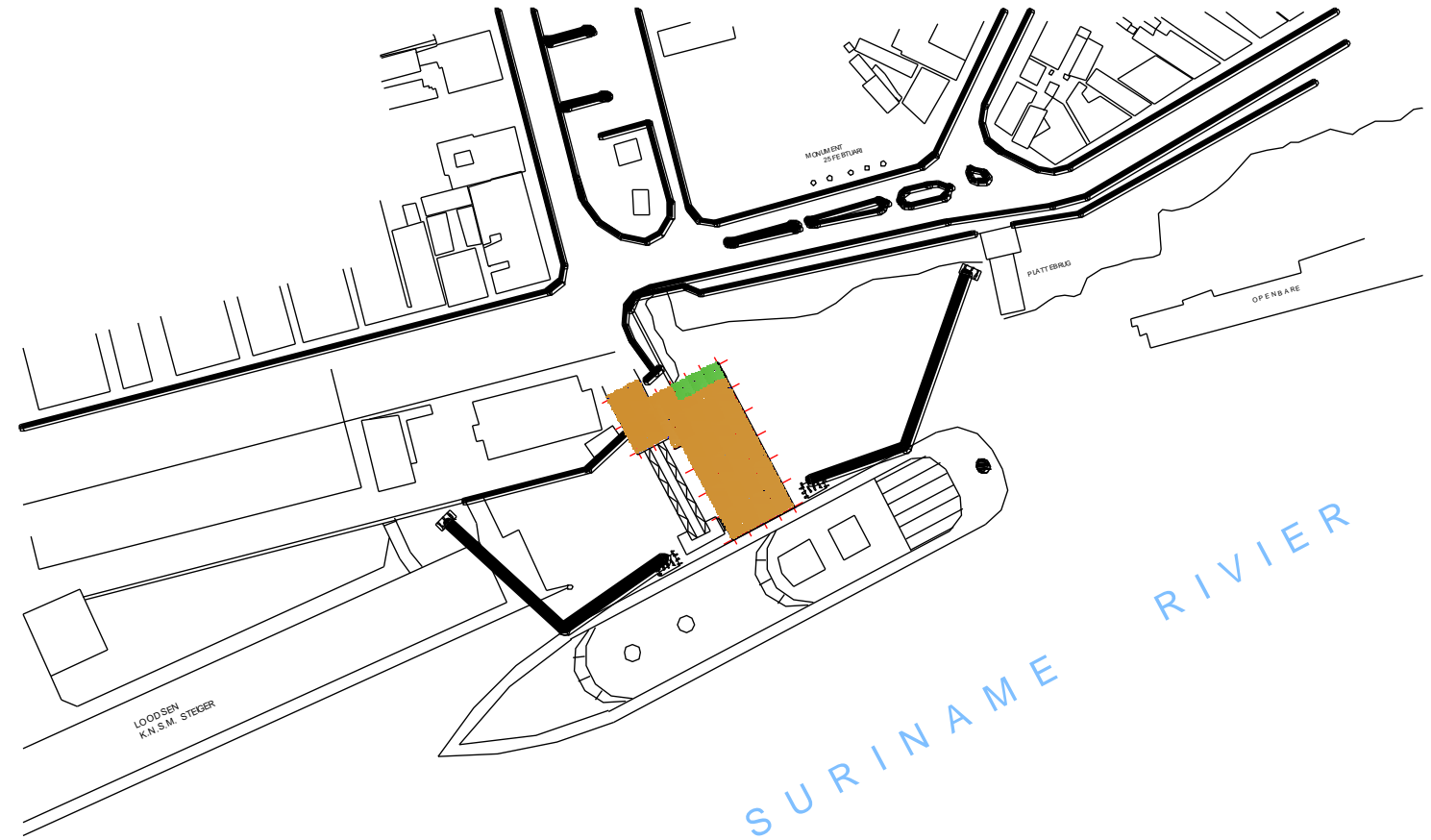
- Material

Steel





- **Cruise terminal**
Suriname river , near Paramaribo
- **Type**
Mooring platform
- **Material**
Concrete



ENGINEERING PUBLIC SPACE



- **Schedule of requirements**

Defining the requirements with the client

- **Research and Design**

We investigate the project location, deliver surveys and calculations. Based on the research data we make a design. We optimize the design, strength and stability calculations.

- **Technical drawings and contract specifications**

Based on the technical design, contract specifications are drawn up

- **Procurement and Construction**

We organize the tender process up to the contract award

- **Application, management and maintenance**

To ensure functionality regular maintenance is essential. We advise on managing construction maintenance and set up maintenance plans.





- Sewage works

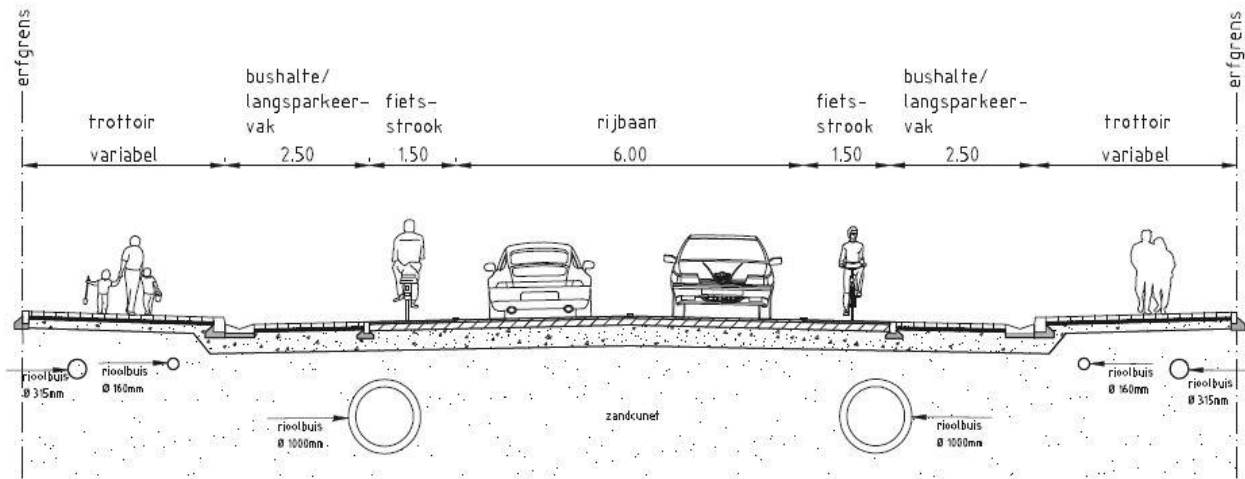
 - Urban areas in Paramaribo

- Type

 - Concrete drain pipes .Length 16.000 m.

- Material

 - Concrete





- **Road engineering**

Highways and roads in urban areas. In different areas.

- **Type**

Soilcement base with an asphalt toplayer

- **Material**

Asphalt





- Potable water container

- Clean drinking water from:
- Polluted freshwater, brackish or saltwater, water wells, waste water
- Production starting from 60.000 ltr per 24 hours

- Characteristics

- Mainly membrane technology
- Chemical free purification process
- Low maintenance costs
- Skid mounted in 20ft sea container

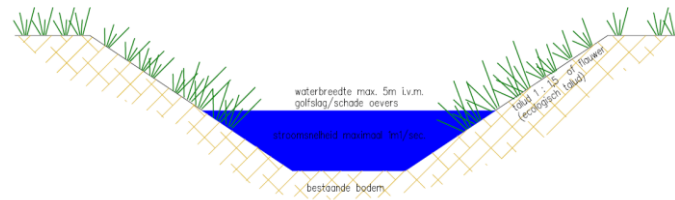
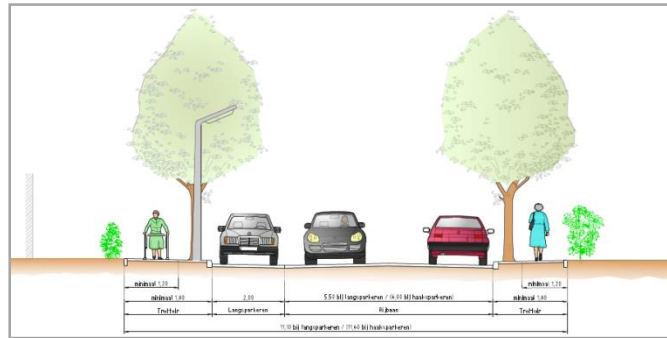


• Unique selling points

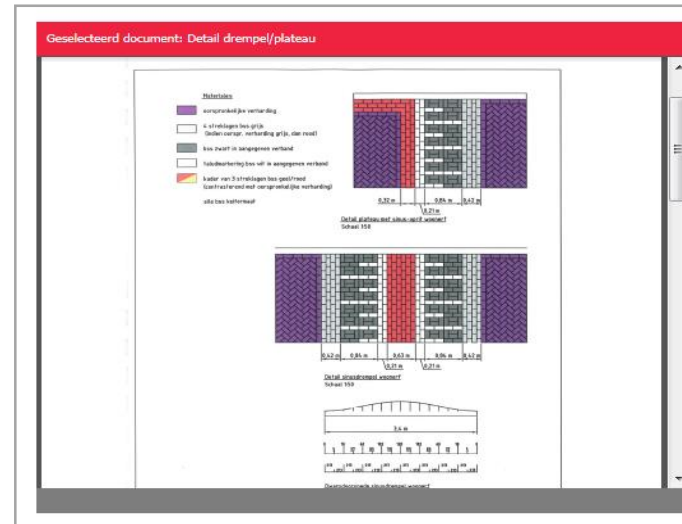
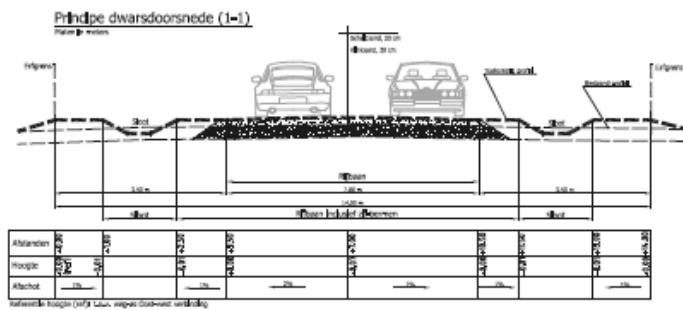
- User friendly and attractive parkingsystem
- Light weight & fast build construction (1-3 months)
- Less failure-cost due to integrated prefabrication
- High residual value, re-usable and recyclable
- Corrosion free and fire resistant coating
- Maintenance friendly and sustainable concept
- Tailor made design



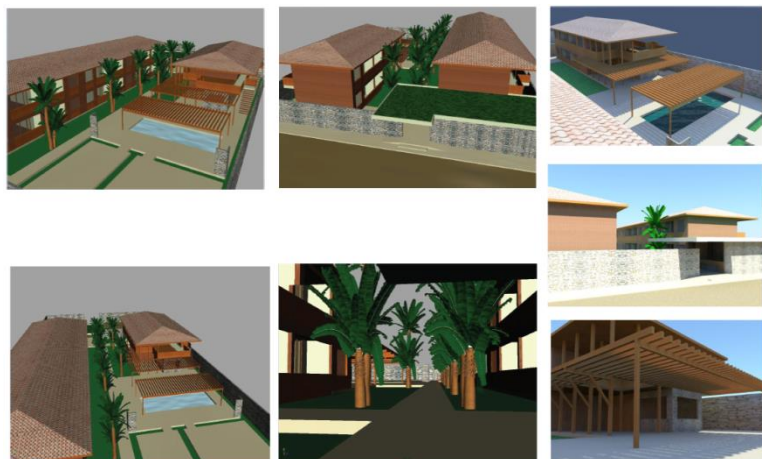
PUBLIC SPACE MANAGEMENT



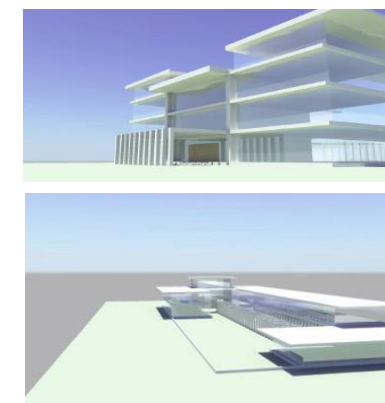
- We support clients in defining policy and making management and maintenance plans
- Policy and organization
 - Vision on design, maintenance and community orientated approach
 - Integrated management systems for public space and guidelines for public space design
 - Analysis of maintenance costs and optimizing workflow
 - Sustainable procurement
- Management and maintenance
 - Maintenance management plans
 - Integrated maintenance plans
 - Costs and funding of public space management
 - Maintenance contracts and specifications
 - Evaluation of management and maintenance plans



URBAN PLANNING & DEVELOPMENT

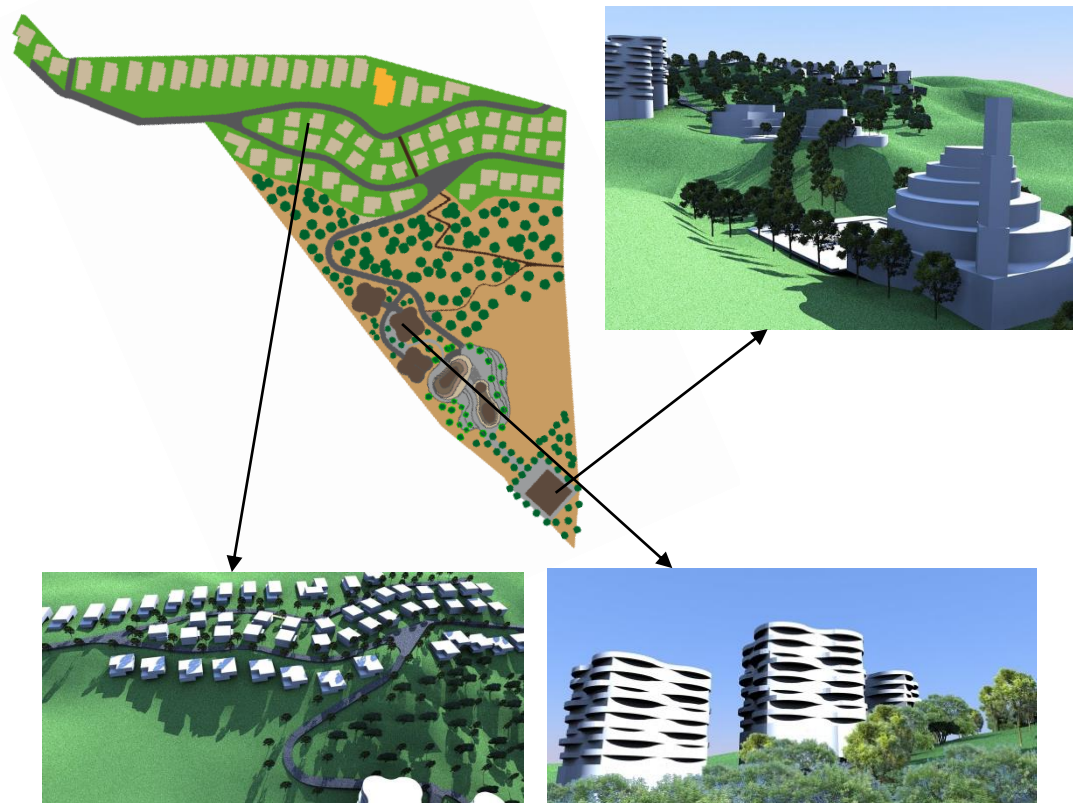


Several house designs
for Surinam market





Land development plan “Dabashan” in Iraq

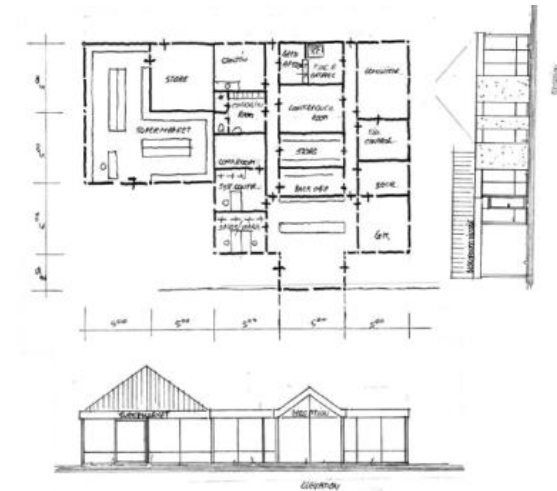
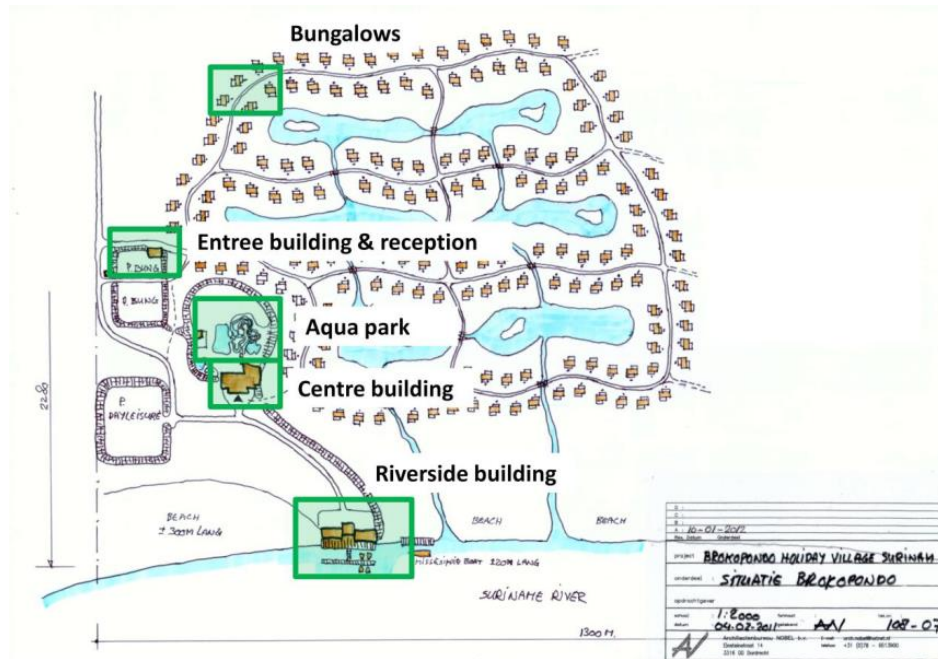


Buildings for the Surinam Brewery





Water park with and buildings Brokopondo village, Suriname

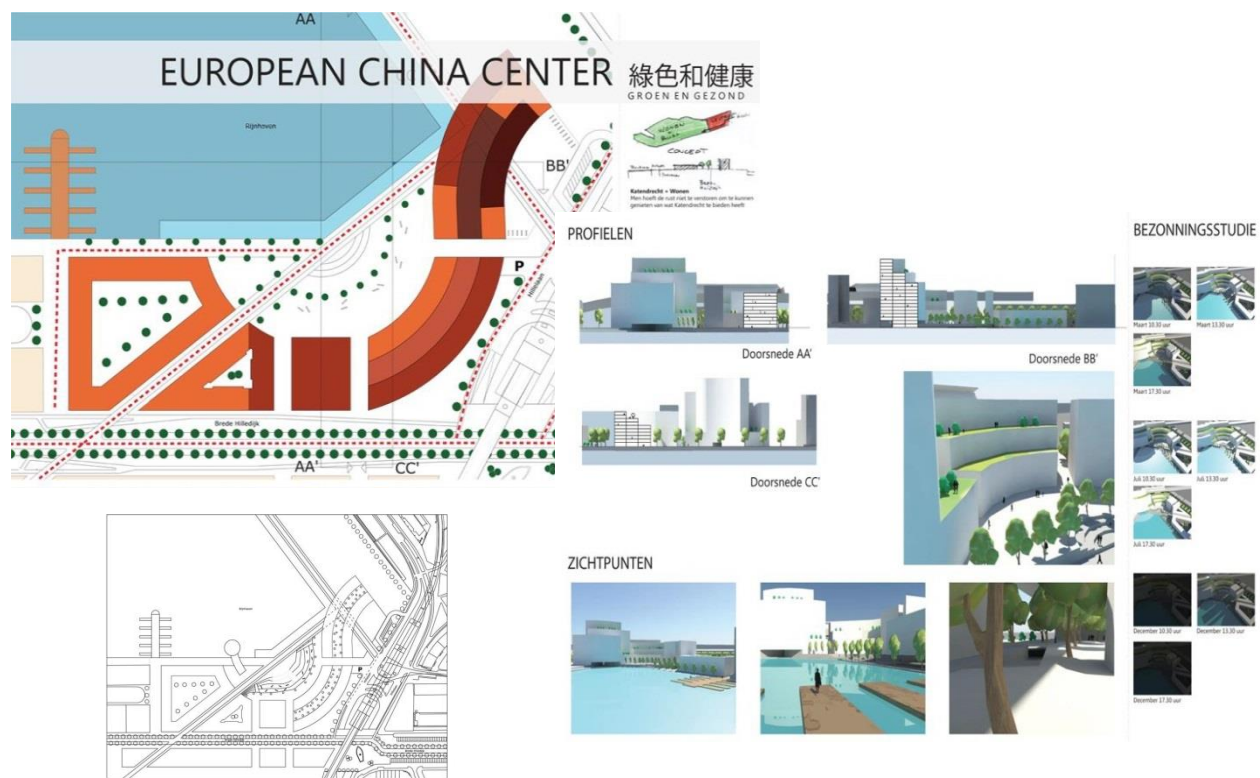




Design study industrial area The Hague, Netherlands



Design study China Center Rotterdam, Netherlands





COMPANY PRESENTATION RD&S GROUP

C!TE

**DA
LI.**

SCINTILLANT
REDEVELOPERS

 2 CHANGE IT

Itailor²

CERTECO
detaching • projectsourcing • interim management

RD&S GROUP FOR SUSTAINABLE RESULTS